

Giovanni Sostero Astronomer

M. Fulle (INAF - OATrieste)

Discovery of 11 SuperNovae (on images by Tim Puckett's program)

2005kc in NGC7311 of mag=18.2

2005ly in UGC934 of mag=18.6

2006H in Anonymous of mag=16.9

2006br in NGC5185 of mag=17.8

2008F in mgc01-08-015 of mag=18.4

2009jp in Anonymous of mag=17.6

2005kz in mgc+8-34-032 of mag=18.2

2006B in UGC12538 of mag=16.7

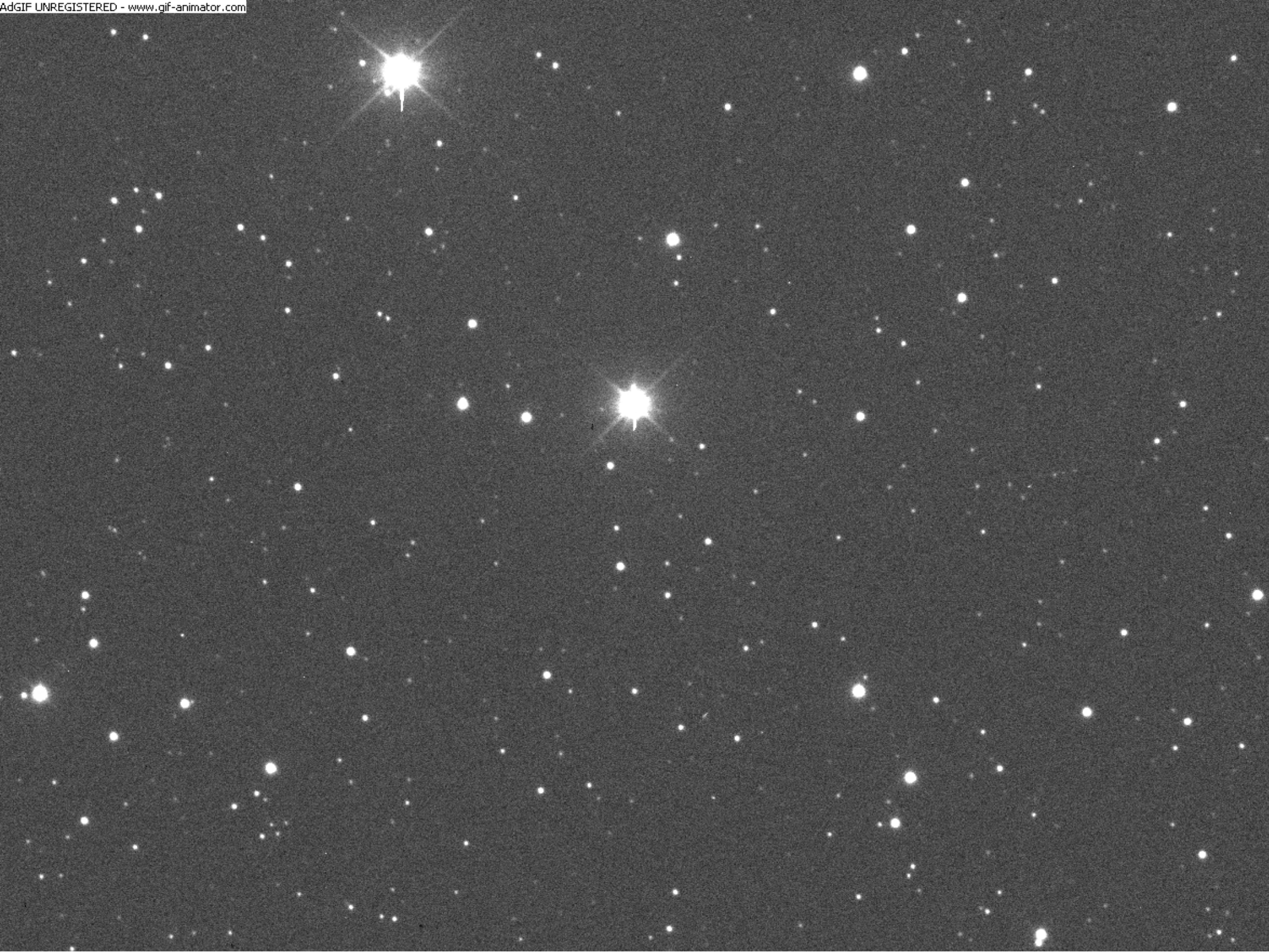
2006bm in Anonymous of mag=18.1

2007cl in NGC6479 of mag=17.6

2008ae in IC577 of mag=17.8

Follow-up of 3 recurrent novae

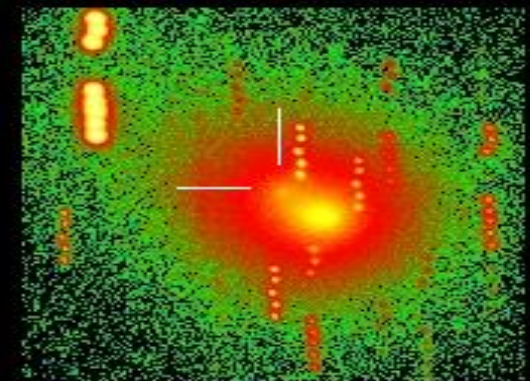
RS Oph (13 Feb 2006), U Sco (28 Jan 2010), T Pyx (16 Apr 2011, next slide)



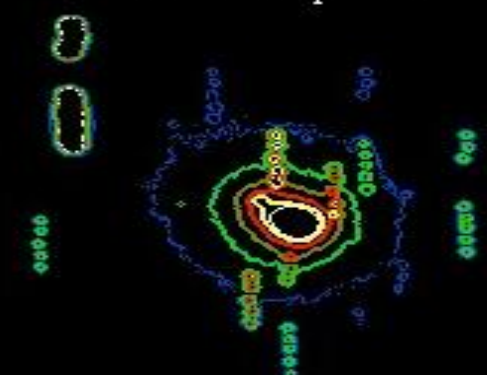


~3'
~83,000 Km

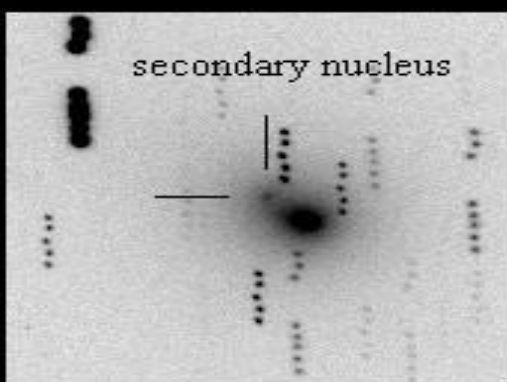
Grayscale logarithmic stretching



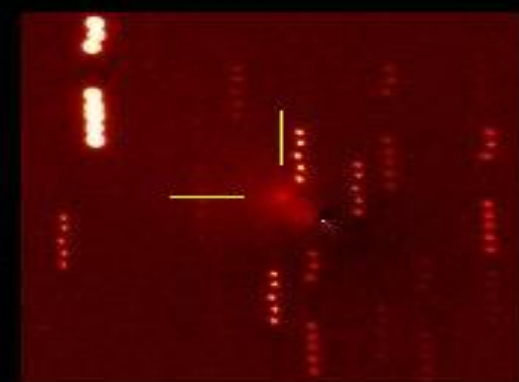
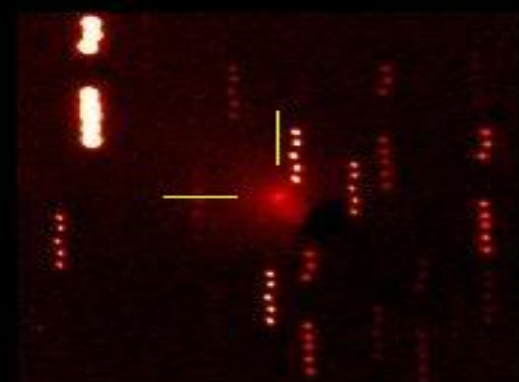
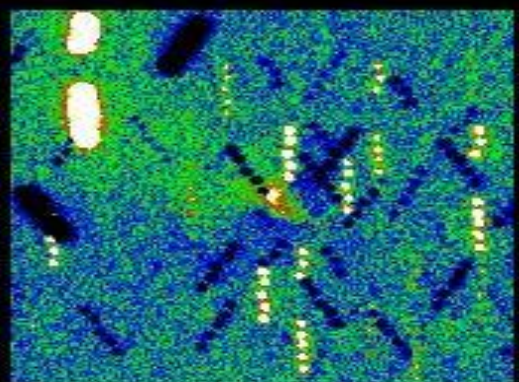
False colors palette



Isophotes



secondary nucleus



Negative logarithmic stretch

Larson-Sekanina gradient

1/r theoretical coma subtraction

Azimuthal median subtr.

C/2005 K2 (LINEAR)

June 14.17, 2005

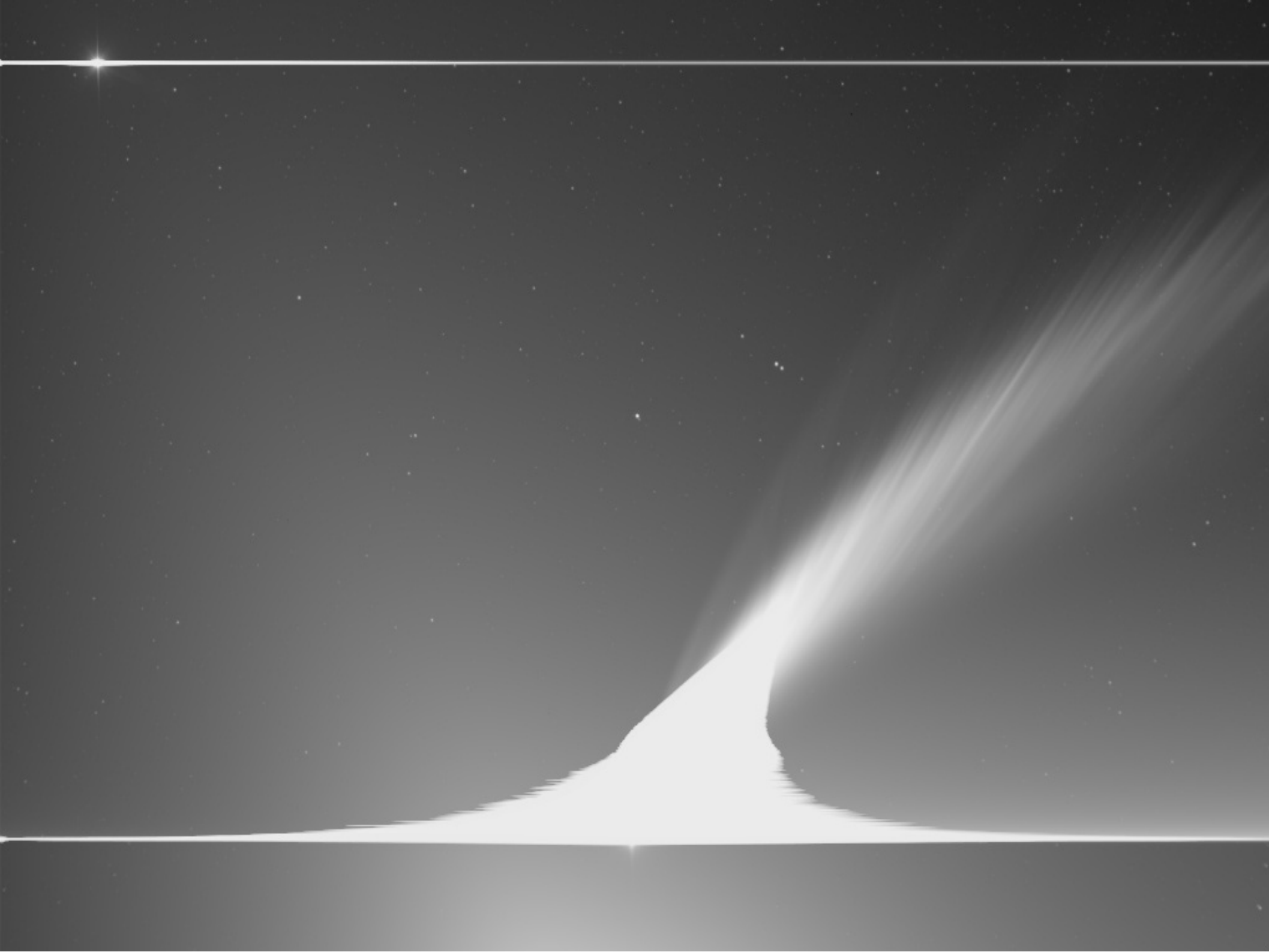
Takahashi Epsilon 250 (D=0.25m, f/3.4) + SBIG-ST8 XE; scale 2.18"/px

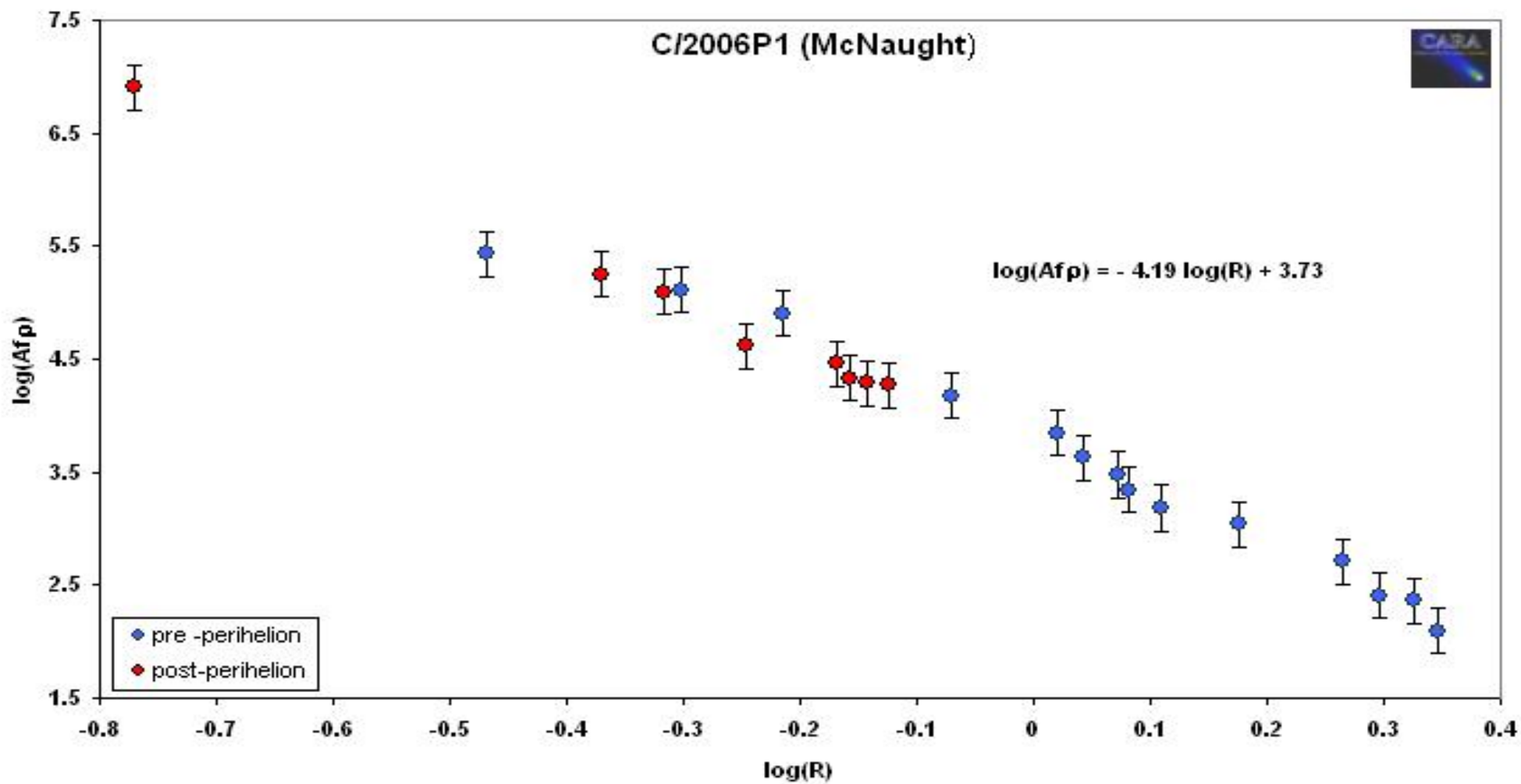
Images obtained by E. Guido in remote mode from the "New Mexico Skies"

Observatory; image processing by G. Sostero



<http://cara.uai.it>





$$Q_{\text{Fe}} = 0.1\% Q_{\text{dust}}$$



20h 26m



20h 32m



20h 39m

Earth distance: 0.00113 A.U. (about 170,000 Km)

Impactor 2008 TC3

2008, October 6

<http://remanzacco.blogspot.com/>

<http://www.afamweb.com>

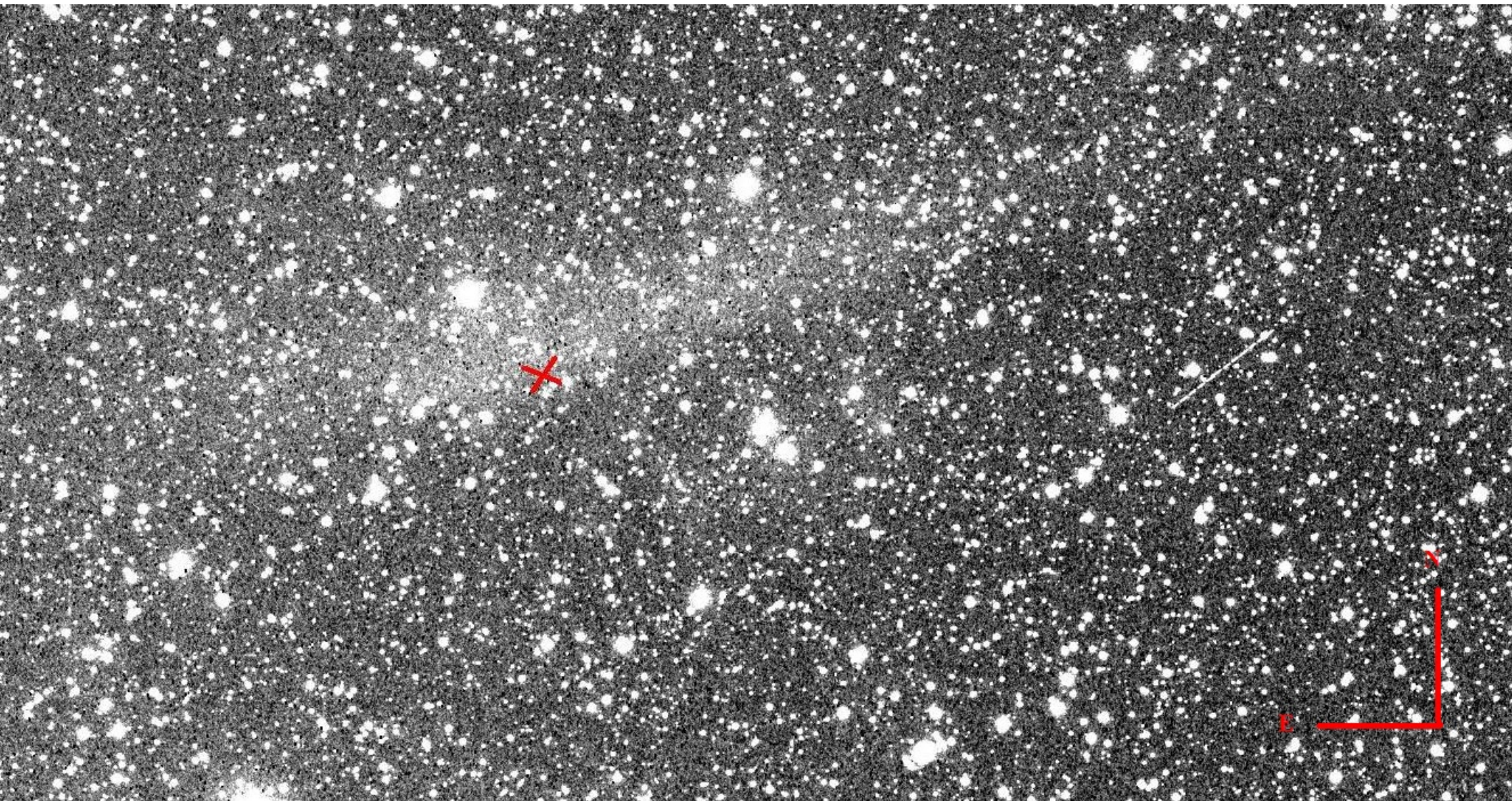
<http://cara.uai.it>

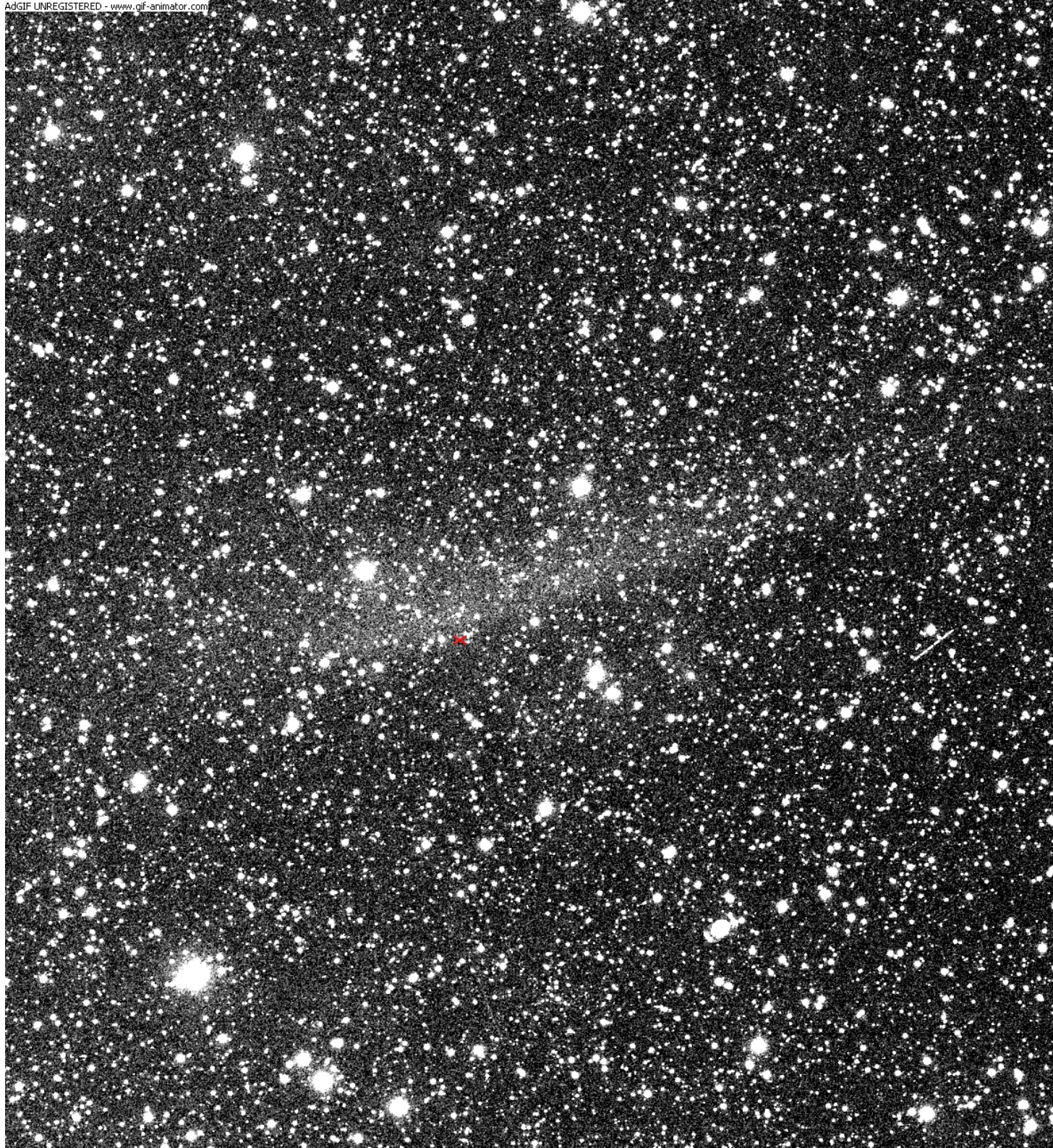
Median of 20 unfiltered exposures 10 seconds each

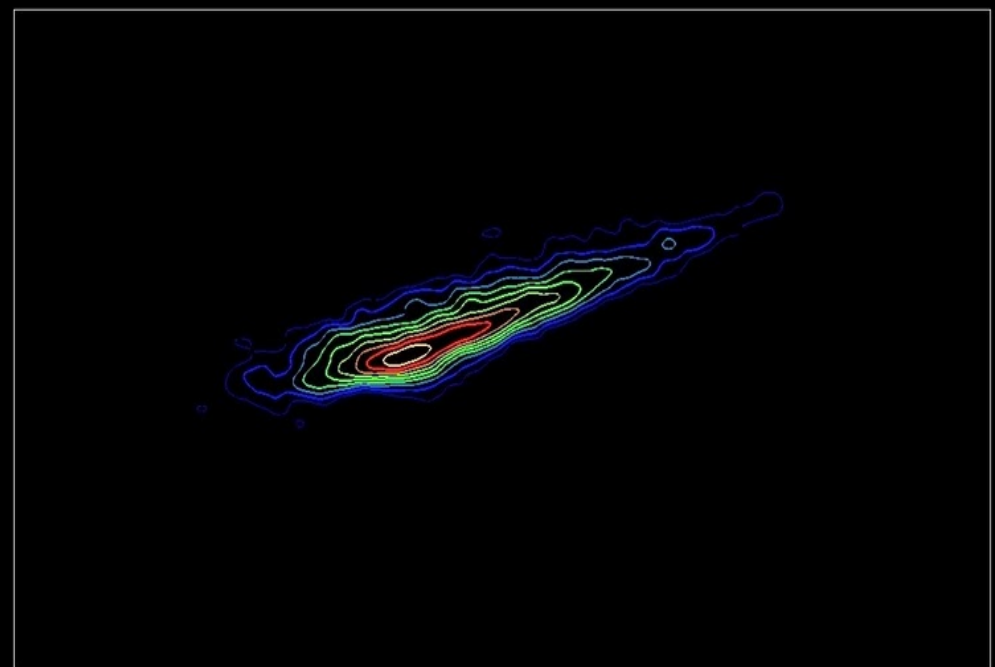
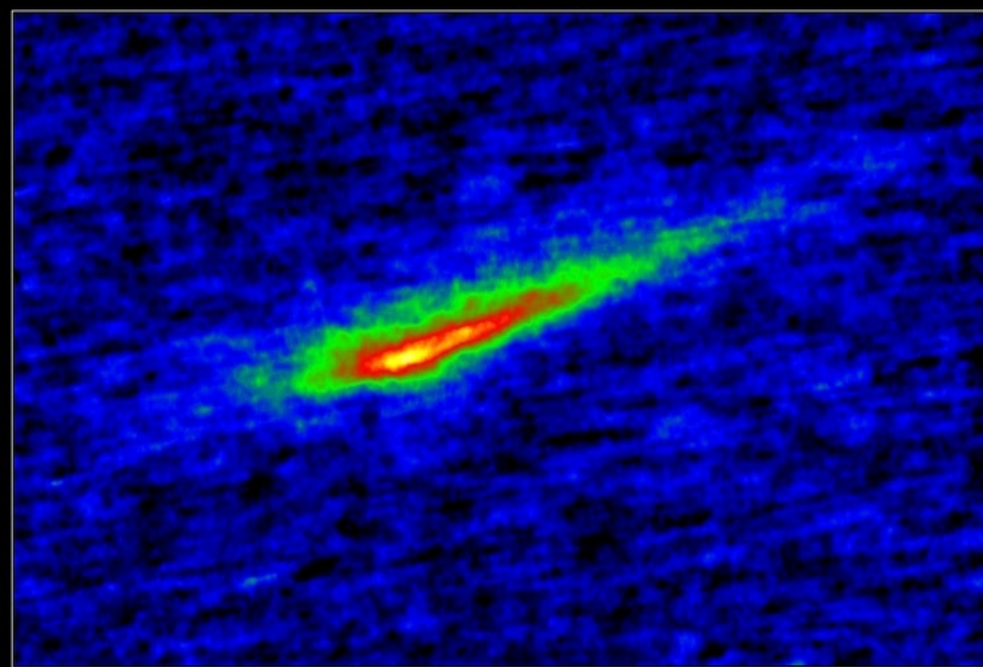
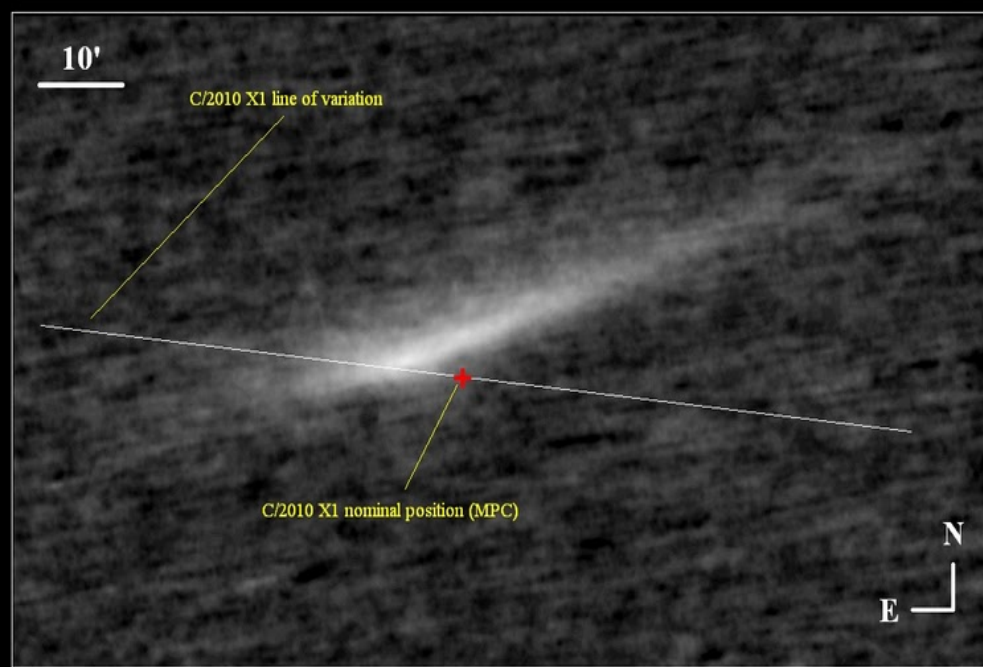
0.45-m, f/4.4 reflector + IMG-1001E

G. Sostero, V. Gonano, E. Guido and P. Camilleri







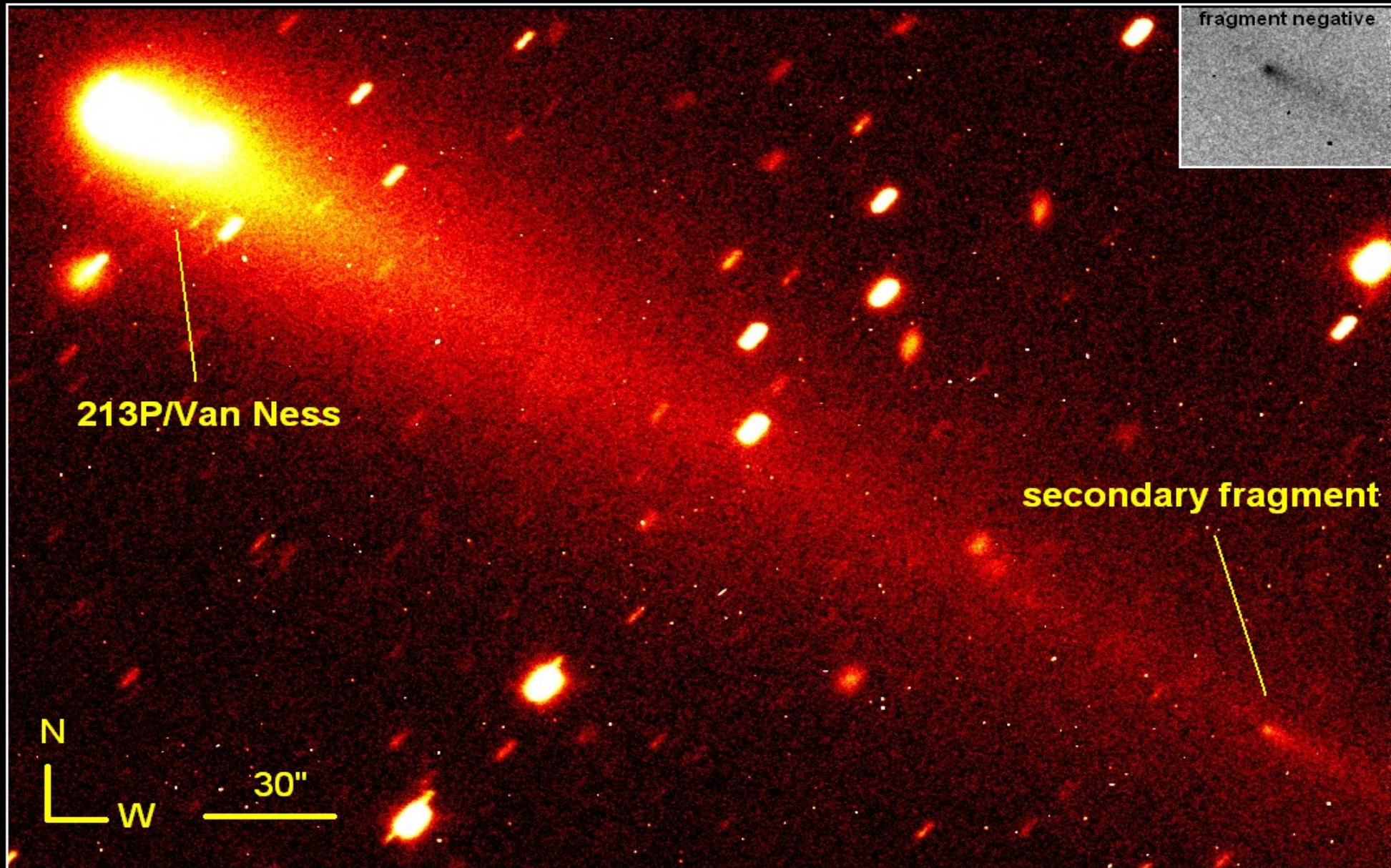


delta= 0.25 AU, r= 1.1 AU, phase= 66 deg, elongation= 100 deg

C/2010 X1 (Elenin)
 Stacking of 12 unfiltered exposures, 300 seconds each
 Takahashi FSQ 106 ED f/5 + CCD
 Remotely through the GRAS network (Mayhill Station, NM)
 E. Guido, G. Sostero and N. Howes

2011, Oct 23.37

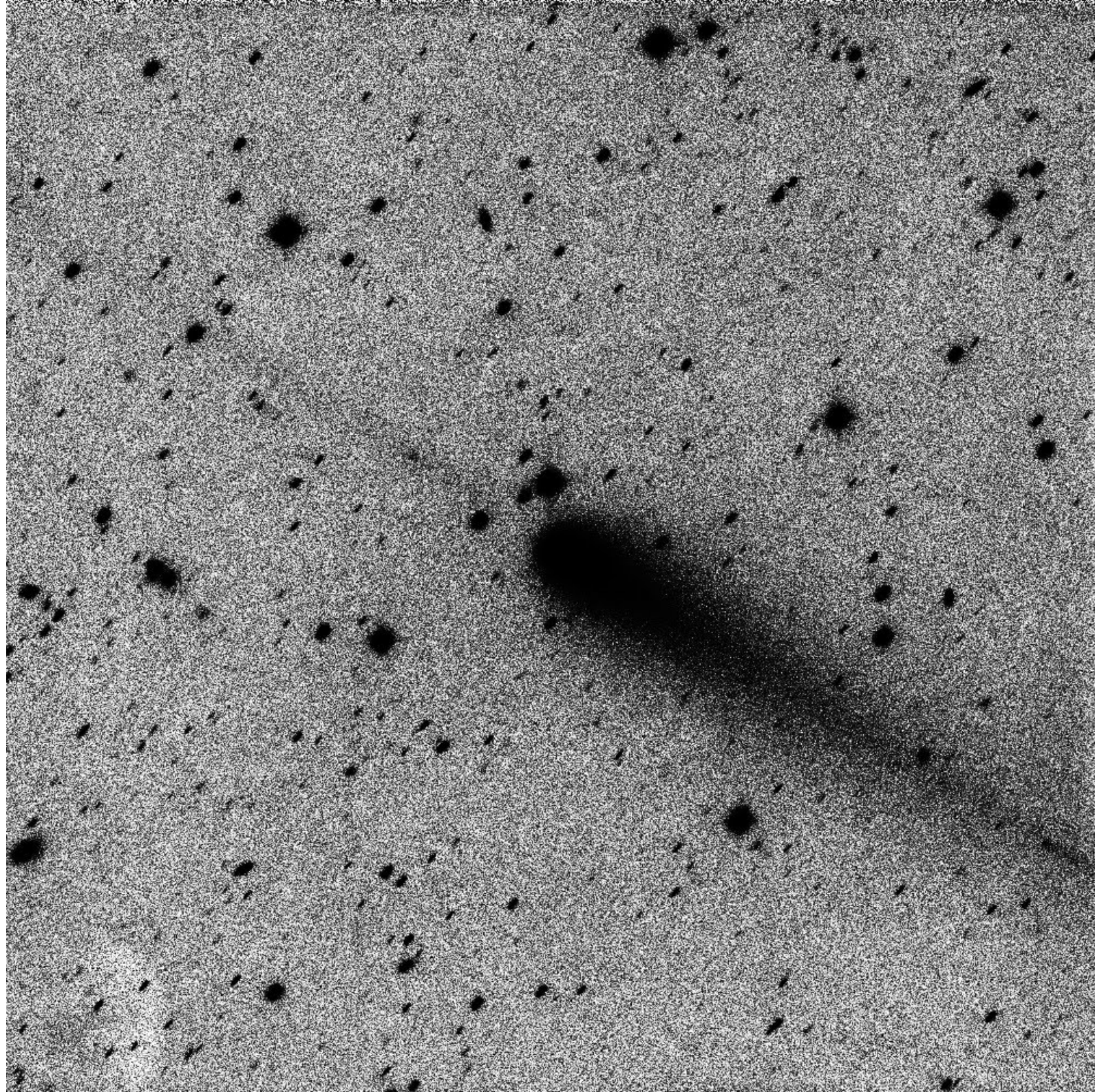


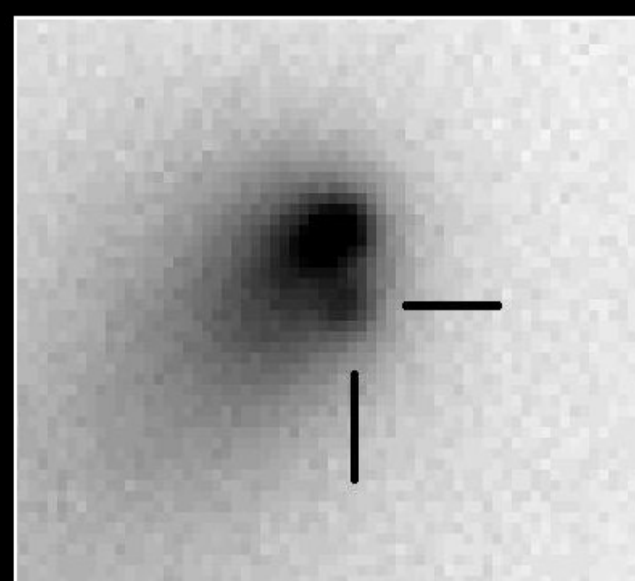
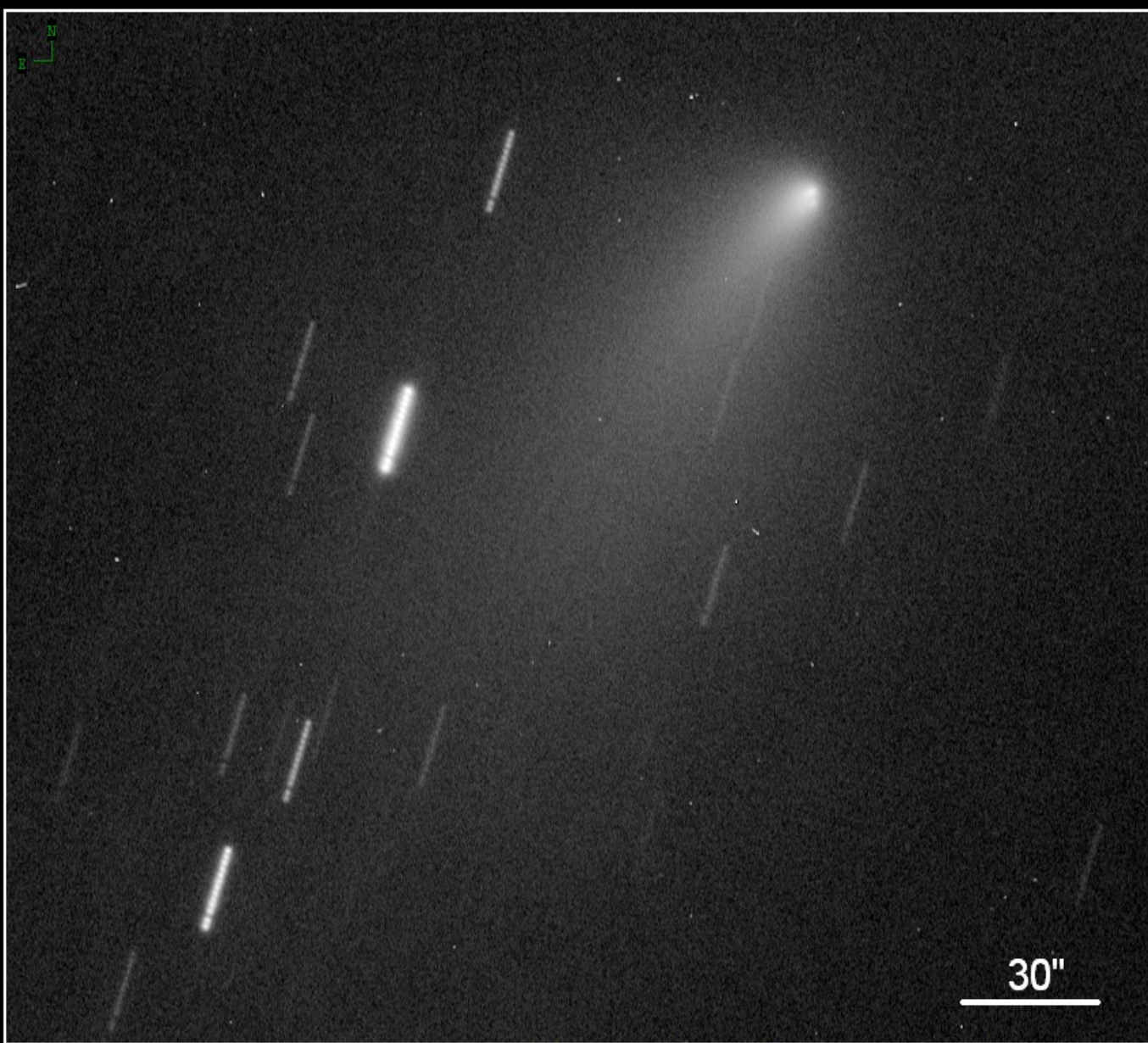


$\Delta = 1.3$ AU, $r = 2.2$ AU, Phase = 17 deg

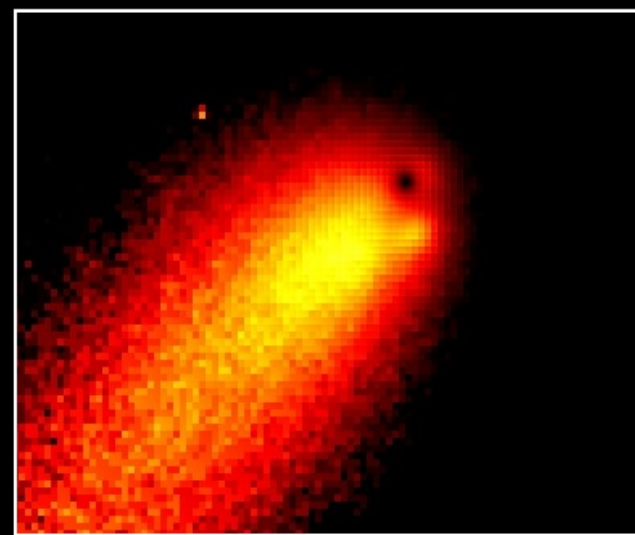
213P/Van Ness and its fragment 2011, Aug, 05.6
Stacking of 11 exposures, 120-sec each
Remotely through the Faulkes Telescope North (Haleakala)
2.0-m f/10.0 Ritchey-Chretien + CCD + Bessel R filter
N. Howes, H. Blyth, G. Sostero and E. Guido







Negative palette, zoom 4x



Azimuthal Median Subtraction, zoom 4x

Delta= 0.53 AU, $r= 1.44$ AU, Phase= 26 deg, Elongation= 141 deg

168P/Hergenrother 2012, Oct. 26.4
 Stacking of 13 exposures, 30-seconds each
 Remotely through the Haleakala-Faulkes Telescope North
 2.0-m f/10.0 Ritchey-Chretien + CCD + Bessel R filter
 N. Howes, G. Sostero and E. Guido

