



Science & Technology  
Facilities Council

# Impact

UK science funding and how STFC implements  
Impact

# 4 July 2012

Calendars + Day Week Month Year Q-

4  
Wednesday, 4 July 2012

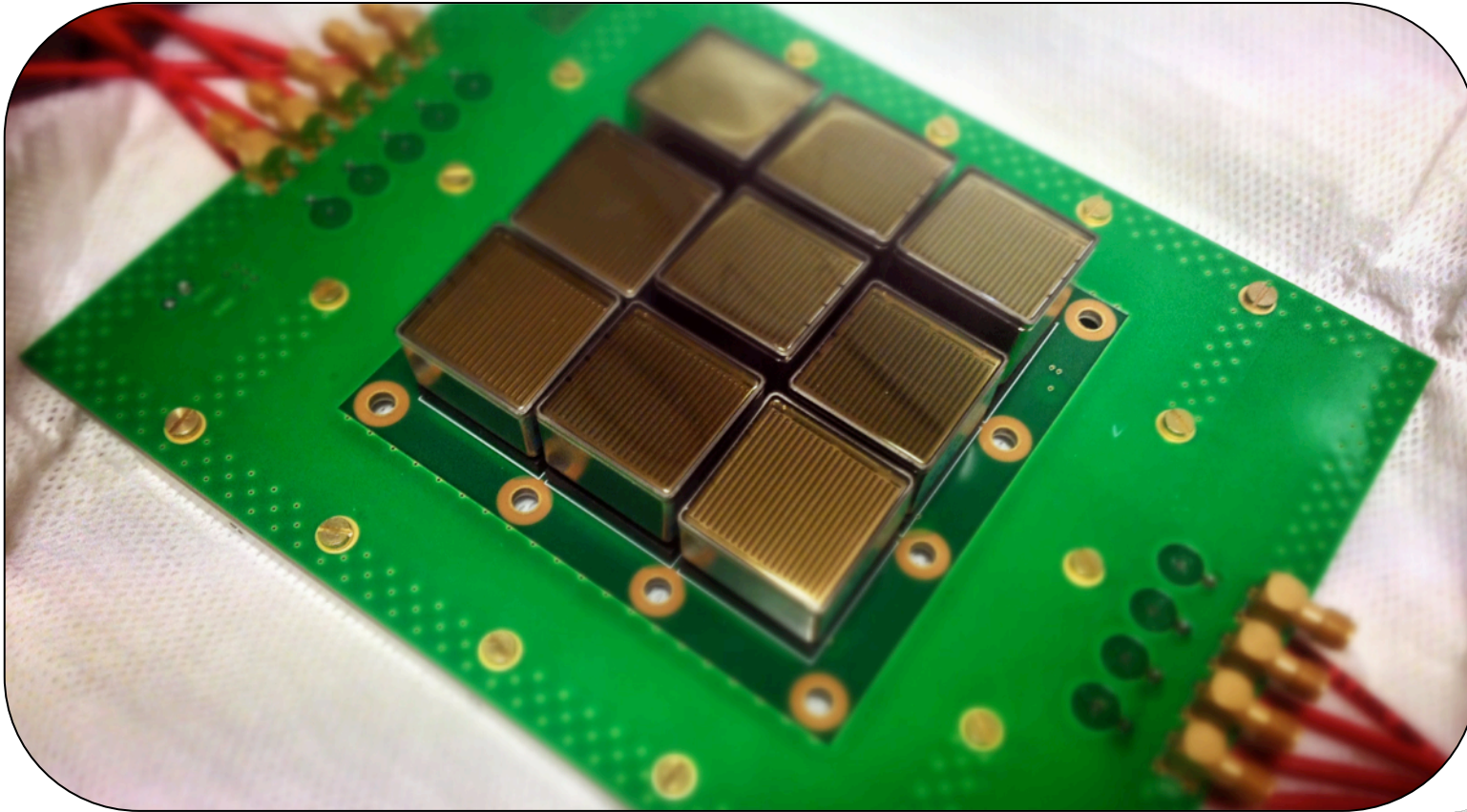
Mon	Tue	Wed	Thu	Fri	Sat	Sun
		4	5	6	7	8
9	10	11	12	13	14	15
16	17	18	19	20	21	22
23	24	25	26	27	28	29
30	31					

all-day events

08:00  
09:00  
10:00  
11:00  
12:00  
13:00  
14:00  
15:00  
16:00  
17:00  
18:00  
19:00

No Events



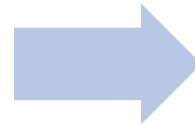


Science & Technology  
Facilities Council





Our vision is to maximise the impact of our science and technology for the benefit of the UK and its people.



Our three strategic goals of delivering world class research, innovation and skills are how we are delivering this impact.



Science & Technology  
Facilities Council

**UK Astronomy Technology Centre**  
Edinburgh, Scotland



**Daresbury Laboratory**  
Scitech Daresbury  
Warrington, Cheshire



**Polaris House**  
Swindon, Wiltshire



**Rutherford Appleton Laboratory**  
Harwell Oxford, Oxfordshire



**Chilbolton Observatory**  
Stockbridge, Hampshire



**Joint Astronomy Centre**  
Hawaii



**Isaac Newton Group of Telescopes**  
La Palma



# Innovation Campuses



**Nationally and internationally recognized open innovation and research and development campuses at Daresbury and Harwell**

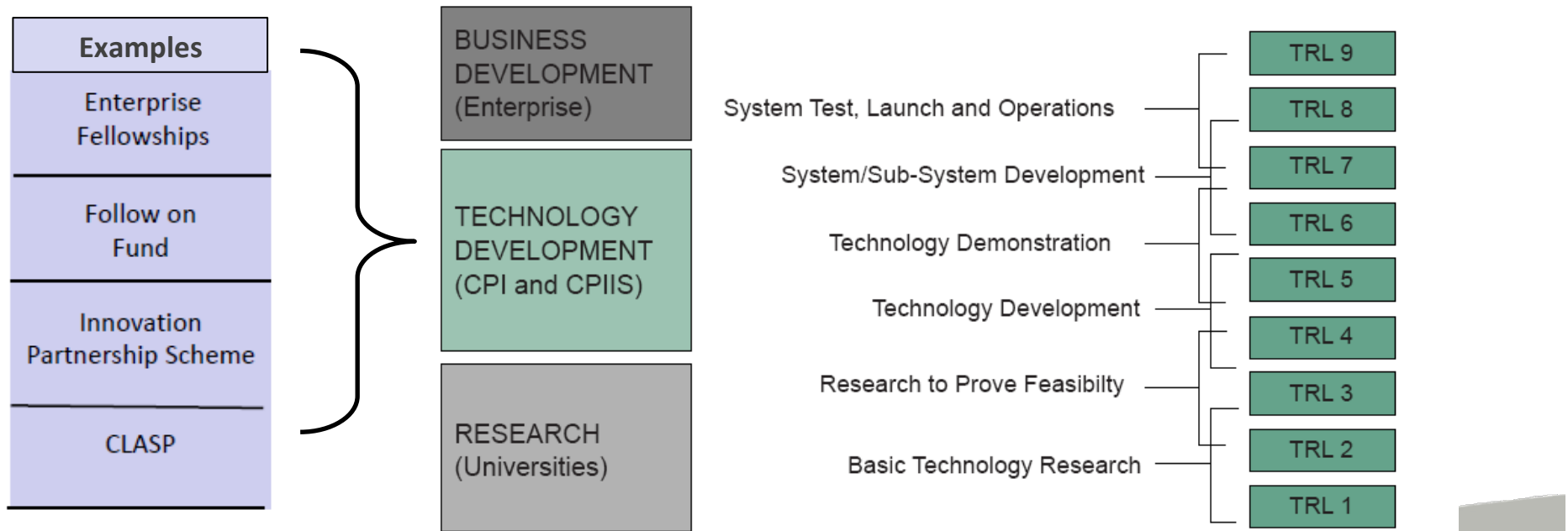


**Science & Technology  
Facilities Council**

# Access To Funding

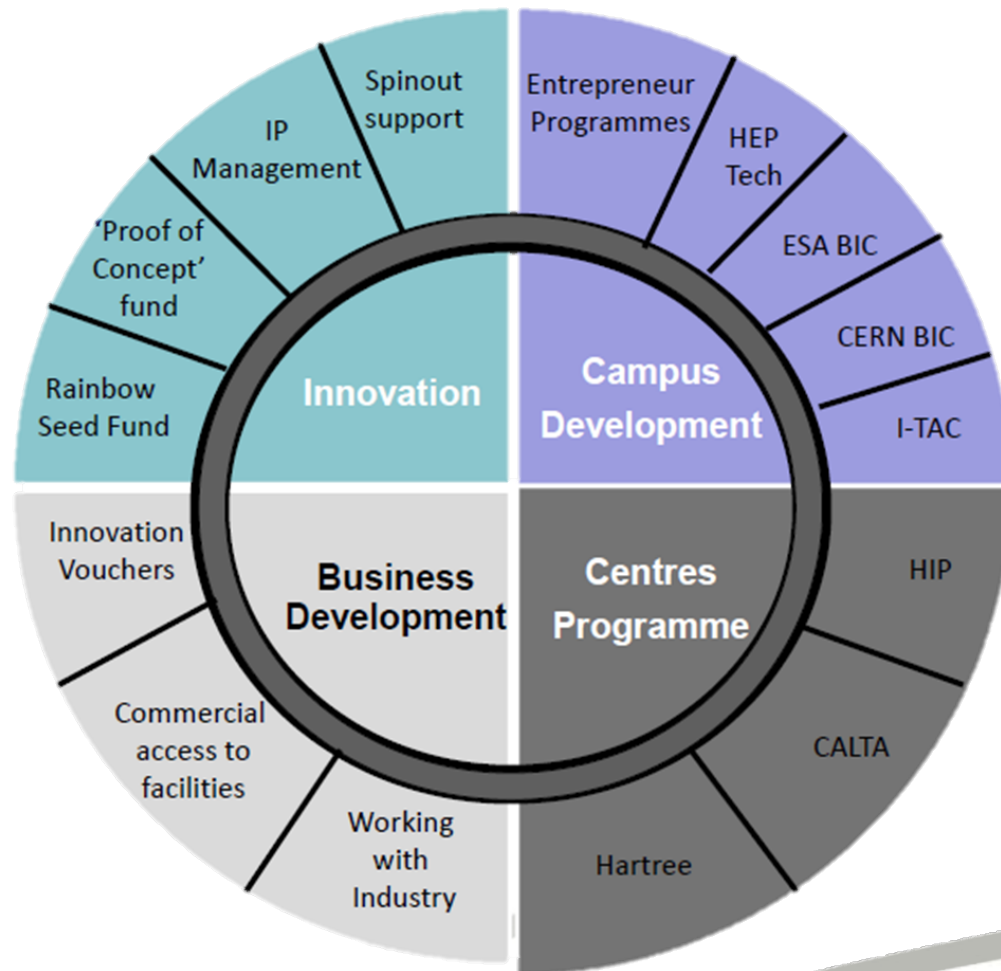
Innovation funding programmes through the whole technology cycle

For STFC funded research or external funding schemes including those by KTN's, seed funds and VC's.





# Delivering Impact



“AMBITION  
Realise the innovative capacity of STFC’s science and research facilities to support the growth of a high technology UK economy.”

STFC Corporate Strategy  
2010-2020

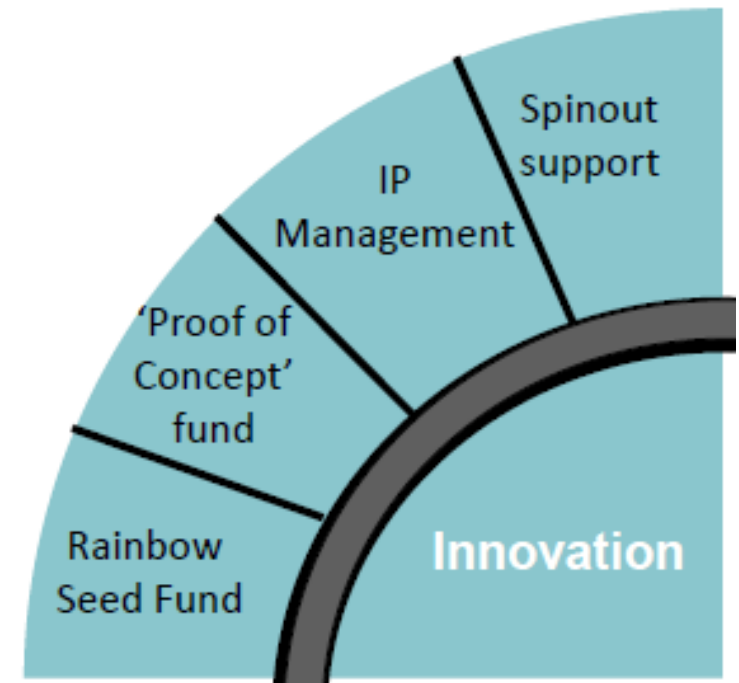


Science & Technology  
Facilities Council

# Innovations

Licensing technology and IP from Innovative Research to industrial partners

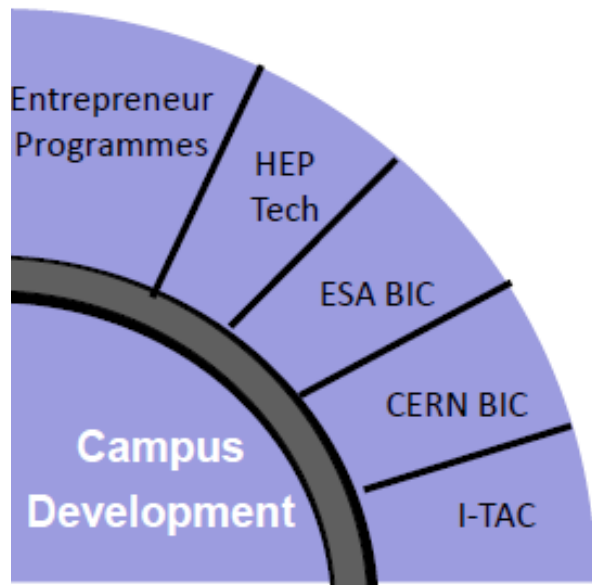
Enabling and supporting new spin out ventures



# Campus Development

**Support businesses on science and innovation campuses**

**Work with external partners to help create innovative space and support for start-ups and SMEs**



**External technology transfer with other organisations and networks**



**Science & Technology  
Facilities Council**

An ideal location for SMEs and start-ups to develop and grow a business, by providing them with the facilities, business support and access to finance.



- i.Strong track record in nurturing and growing high-tech SMEs.
- ii.Award-winning incubator facility, the Innovations Technology Access Centre, and manage two incubation initiatives in partnership with ESA and CERN.
- iii.Also work with the Oxford-based Future Pre-Business Incubator to exploit our partners' technologies.



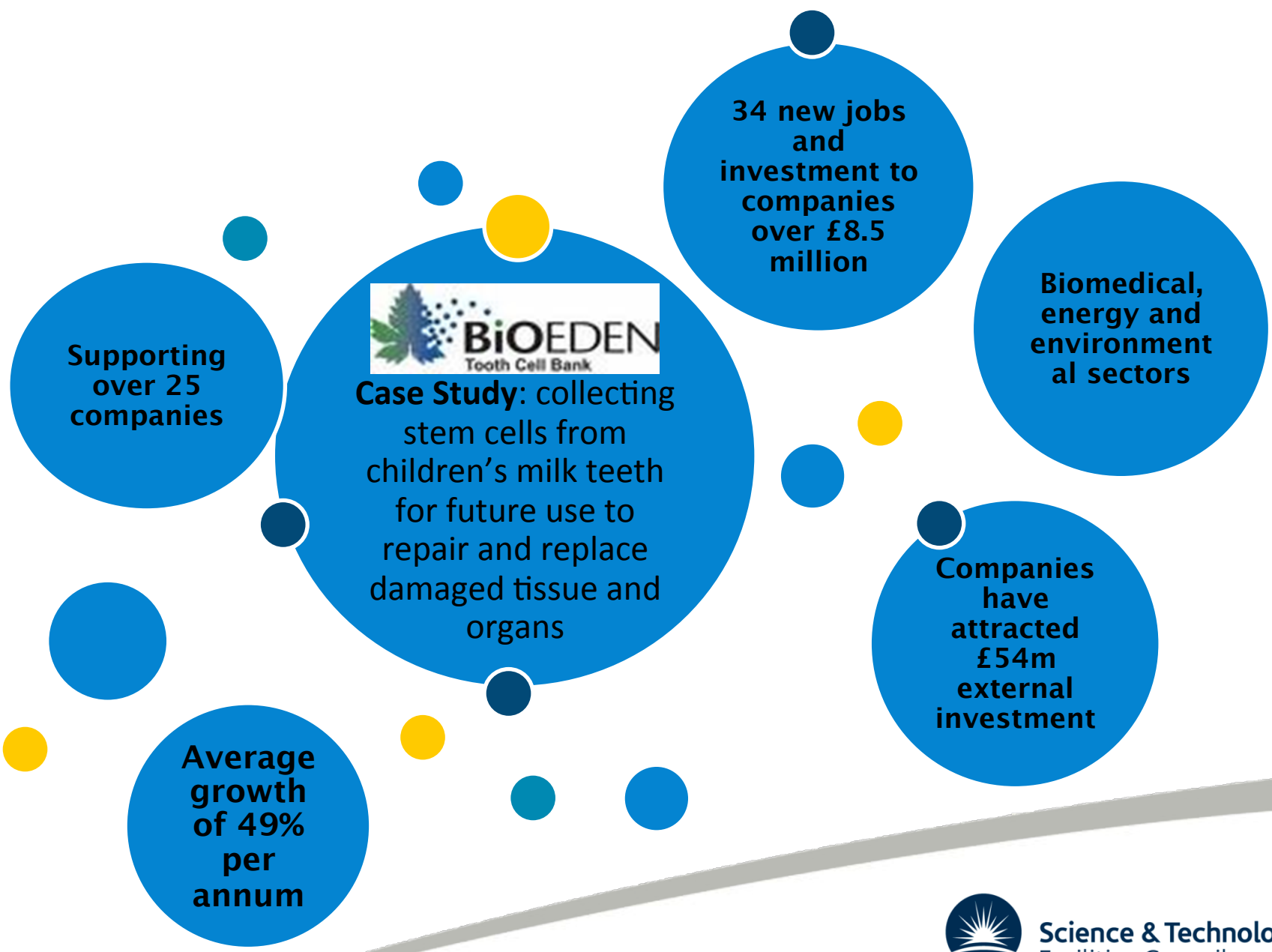
# Innovations Technology Access Centre

Accelerating growth through access to...

- STFC's world class research facilities
- Specialist expertise and technologies
- Dedicated business support networks



Science & Technology  
Facilities Council



**Supporting  
over 25  
companies**



**Case Study:** collecting stem cells from children's milk teeth for future use to repair and replace damaged tissue and organs

**34 new jobs  
and  
investment to  
companies  
over £8.5  
million**

**Biomedical,  
energy and  
environmental  
sectors**

**Companies  
have  
attracted  
£54m  
external  
investment**

**Average  
growth  
of 49%  
per  
annum**



**Science & Technology  
Facilities Council**

# CERN Business Incubation Centre (BIC)

- CERN is the European Organisation for Nuclear Research
- At CERN they study the fundamental structure of the universe using the world's largest and most complex scientific instruments.
- The CERN BIC is a partnership between STFC and CERN
- Supports and grows start-ups and small businesses with technologies originating from high energy physics
- Utilises STFC incubation experience and gives access to CERN and STFC IP, technologies and expertise



# ESA BIC Harwell



- The European Space Agency (ESA) is Europe's gateway to space.
- Shapes the development of Europe's space capability and ensure that investment in space continues to deliver benefits to the citizens of Europe and the world.
- ESA BIC is a partnership with STFC and ESA at Harwell Oxford Campus.
- Provides business support and facilities that enable them to develop space technologies into successful non-space technologies.





## High Energy Physics Technology Transfer Network

- Draws together leading European institutions and universities.
- Access to unique skills, capabilities, technologies and R&D opportunities.
- Promotes the expertise and technologies of its members to industry and society.
- Provide an Intellectual Property Charter to ensure socio-economic benefits, while maintaining open science environment.
- Study the impact of particle, astro-particle and nuclear physics.



Science & Technology  
Facilities Council

# High Energy Physics Technology Transfer Network

- Inspire the next generation of PhD to make their research change the world.
- Early stage researchers
- 1 week long
- Inspiring programme leading to academic industrial collaborations



Leading into a COST application

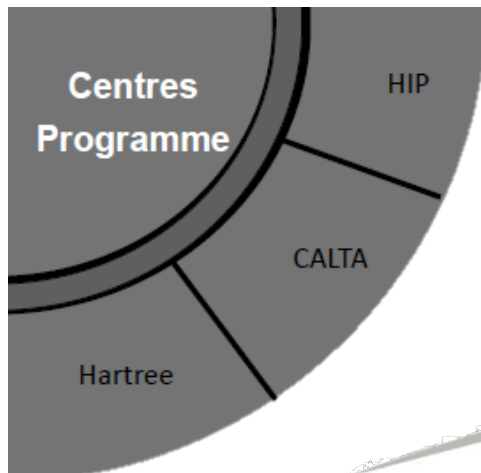


**HEP**Tech

Leading HEP technologies for industry  
Technology Transfer opportunities

# Centres Programme

- **HIP: Harwell Imaging Partnership**
  - Industrial access to imaging facilities
- **Centre for Advanced Laser Technology and Applications**
  - Next Gen Laser technology
- **Hartree**
  - High Performance computing

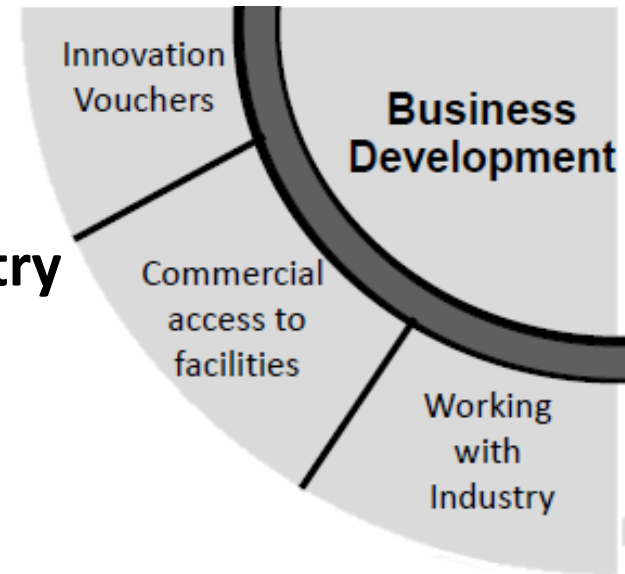


# Business Development

**Building business opportunities for STFC**

**Innovation Vouchers £5 000 per company**

**Gateway between researchers and Industry**



**Science & Technology  
Facilities Council**

# Areas of Impact

## Creating capability and advancing the UK's skills base

- An estimated 26 million people followed coverage of the discovery of a new Higgs-like particle – a breakthrough where STFC played a prominent role.

## Improving the performance of existing businesses

- Oxford Instruments and e2v have enjoyed benefits worth an estimated £500-700 million from collaborating with STFC and our university research communities.

## Creating and nurturing new businesses

- Portable X-ray scanners for on-scene emergency care and revolutionary graphics and gaming software are just two valuable spin-offs from our science and technology.

## Improving public policy and public services

- Our research has deferred £3 billion of decommissioning and replacement costs by helping to extend the lives of two of the UK's nuclear power stations.

## Attracting R&D investment from global business

- A £20 million investment by a world leader in synthetic diamond supermaterials is set to create over 100 jobs on the Harwell Oxford Campus.



L3technology

Scitech  
PRECISION

PETRA Ltd

CryoX

cellaenergy

microvisk  
technologies

Teratech  
Components Ltd

Oxsensis  
multi parameter optical sensing

Constellation  
Technologies  
The SuperCloud™

cobalt LIGHT  
SYSTEMS  
INSIGHT FROM LIGHT

ThruVision™  
Systems

DSOft  
SOLUTIONS

Orbital Optics

The  
ELECTROSPINNING  
Company

POWER  
PREDICT

Quantum  
DETECTORS



Science & Technology  
Facilities Council

# Any Questions?

Ian Tracey  
@iantracey  
ian.tracey@stfc.ac.uk  
+44 7734 111 223



Science & Technology  
Facilities Council